

STATEWIDE NETWORK NEWS

North Dakota Teacher Center Network

Serving Teachers and Schools Since 1977



2015 State POL Champion
J'Kobe Wallace Minot High School

**JOIN THE
CONVERSATION**

REGISTER BY NOVEMBER 1, 2015



WHAT IS POETRY OUT LOUD?

Poetry Out Loud (POL) is a free national program sponsored by the National Endowment for the Arts, the Poetry Foundation and North Dakota Council on the Arts. By incorporating memorization and performance in the classroom, POL sets the stage for students to deepen their understanding of figurative language, word relationships and the nuances within word meanings. In addition, students learn about great poetry, explore their literary heritage and gain confidence in public speaking skills.

Starting at the classroom level, teachers use free POL multimedia curriculum materials – a Teachers' Guide, DVD, posters, and comprehensive website, all aligned to national standards – to augment their regular poetry curriculum with poetry recitation and a classroom-level competition. Winners advance to a school-wide contest, State Finals and, ultimately, to the National Contest held in Washington, D.C. Read more about POL at: <http://www.poetryoutloud.org/> & <http://ndpol.weebly.com/>

WHO CAN PARTICIPATE?

Any school or homeschool group in North Dakota that teaches students in grades nine through twelve can register to participate in POL. Public, private, parochial, alternative, independent, and Christian schools - as well as homeschool groups or organizations and school-sponsored afterschool programs - are encouraged to participate.

AWARDS

The State Champion receives \$200 and an all-expense-paid trip, with chaperone, to Washington DC to compete in the National POL Contest. The Champion's school receives a \$500 stipend for the purchase of poetry materials. The runner-up receives \$100, with \$200 for his or her school library. At the National Contest, contestants compete to earn awards in the amounts of \$1,000, \$5,000, \$10,000 and a grand prize of \$20,000.

HOW TO REGISTER

All schools wishing to participate in the North Dakota POL program must officially register through North Dakota Council on the Arts. POL Teacher Resource materials will be mailed to all participating teachers. To register contact Rebecca Engelman at: rengelman@nd.gov, or download and submit the online registration form found at: <http://ndpol.weebly.com/teacher-resources.html>. Early Bird Registration Deadline is October 1, 2015. All registrations must be received by November 1, 2015.

NORTH DAKOTA STATE CHAMPIONS

See our North Dakota POL Champions in action at: <http://ndpol.weebly.com/video-presentations.html>.



NDTCN

North Dakota Teacher Center Network

MISSION

The mission of the North Dakota Teacher Center Network is to assist practicing teachers, education students and other educational personnel in professional knowledge and skill development to improve the learning of students.

GOALS

1. Deliver professional development based on research and best practices.
2. Facilitate joint projects and exchange of services between K-12 schools, state and federal agencies and institutions of higher education for professional development of practicing teachers, education students and other educational personnel.
3. Communicate via print and/or electronic mediums to all constituents.
4. Provide practicing teachers, education students and other educational personnel with access to instructional resources and educational equipment.

INFORMATION

Contact NDTCN
www.sendit.nodak.edu/tcn
sdt-tcn@listserv.nodak.edu

Newsletter Advertising
Clearwater Communications
(701) 355-4458



Graduate School



The MSU Graduate School offers nine master's degrees and one education specialist degree. Courses are available on campus, online, over IVN, and at other North Dakota locations.

The Master of Education degree offers several distinct concentrations as well as the option for a student to self-design a concentration to meet his/her classroom needs. The Master of Science in Special Education offers five concentrations, including Deaf Education and Developmental Disabilities/Autism Spectrum Disorders. For more focused discipline specific programming, students may select from a Master of Arts in Teaching (MAT) in Mathematics or Science, the Educational Specialist degree in School Psychology, or Master of Science degrees in Management or Information Systems.

The required capstone experience varies from completing a capstone course, an action research project, an artistic exhibition, a thesis, or written and oral comprehensive exams. Most programs provide students a choice for their final experience.

Several programs are state or federal grant supported, providing admitted students a range of financial support for their education. Additionally, MSU offers all students, regardless of residency, a low tuition rate of \$325.82 per credit for campus classes and \$327.42 per credit for online, IVN internet synchronous using Blackboard Collaborate, and other locations.

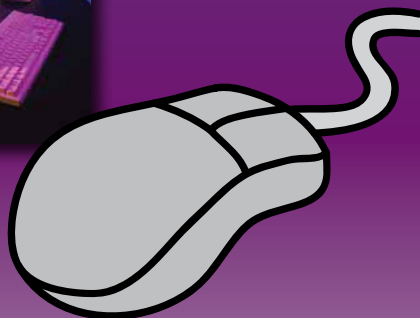
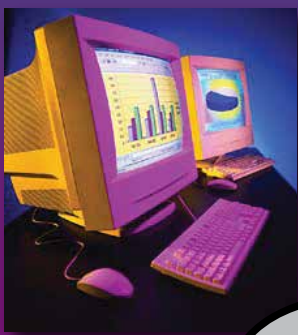
CONTACT THE GRADUATE SCHOOL
today to learn more about what you can gain from graduate study at Minot State University!

701-858-3250 or 1-800-777-0750, ext. 3250
or for more information visit us online at
www.minotstateu.edu/graduate

NDTCN

is on the

Web!



Check us out at

www.sendit.nodak.edu/tcn
sdt-tcn@listserv.nodak.edu

Grade 8 North Dakota Studies ndstudies.gov/gr8

NOW ONLINE

- More than 90 topics
- Based on primary sources
- Thematic and chronological approach
- For use on tablet, desktop, phone

"The new website is such a great resource - easy to use and applicable to teaching ND Studies."

-ND Studies Teacher



think **EXCEPTIONAL** discover **UND**

- Online Master's Degrees -
Early Childhood Education
Instructional Design & Technology
Reading Education
and more!



Convenient
Flexible
Affordable

UND UNIVERSITY OF
NORTH DAKOTA
ONLINE & DISTANCE EDUCATION

1.800.CALL.UND
UND.edu/online
@UNDonline

NDTCN Teacher Centers

Bismarck Area Teacher Center

701-323-4075

Grand Forks Area Teacher Center

218-779-5121

Lake Region Teacher Center (Devils Lake)

701-662-7650

Mayville Teaching Learning Center

701-788-4827

Mid-Dakota Teacher Center

701-858-4701

North Central Teacher Center (Bottineau)

701-228-5466

Valley City Area Teacher Center

701-845-7282

West River Teacher Center (Dickinson)

701-483-2152

Williston Area Teacher Learning Center

701-609-5681

